

The Podium

Achieving Optimal Academic Performance



Recently, whilst on leave, Mrs Perks and I had the opportunity to visit Singapore and meet with Ms Ming Li, the Head of High Performance at the Singapore Sports School, as well as being invited to watch the Singapore Schools National Netball qualifying rounds. This enabled us to re-establish Bacchus Marsh Grammar's connection and friendship with the Singapore Sports School. Bacchus Marsh Grammar has been visiting the SSPS on training camps and Netball Tours for the past 11 years and it was wonderful to discuss our first post pandemic Netball Tour which will take place in November this year. Partnerships and friendships such as these are vital for organisations if they wish to share, improve and perform optimally. One of the discussion points during this meeting was the mindset that elite athletes have and how we can relate these to academic and creative pursuits. One of the points that was made was that all athletes face a moment where they must honestly ask themselves, **"Am I interested in this goal or am I COMMITTED?"**.



There is a big difference. If you are only interested in a goal then you will eventually find reasons and excuses as to why it wasn't possible for you to succeed; however, if you are COMMITTED you will keep showing up no matter what. You will do everything in your power to succeed. Let us continue to create an environment and culture at Bacchus Marsh Grammar School where students are nurtured, supported and educated academically, athletically and artistically, so they can be totally committed and not merely interested.

Mr Andrew Perks
Assistant Principal Optimal Performance Learning

Reminder:

As per [Term Dates](#) information, the School has a Mid-Term break on Monday 15 August.
No staff or students attending school on this date.

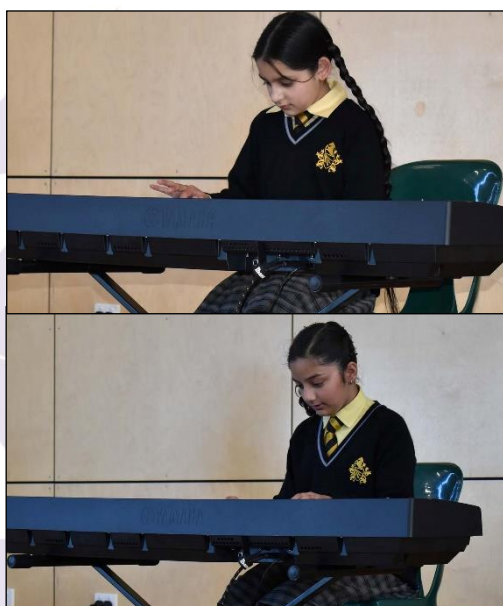
Music Department - Student Success

Congratulations to the following students for their recent examination success:

Student Name	Section	Result
Allan Wang	AMEB Piano Comprehensive Grade 8	A+ High Distinction
Stefania Robu	AMEB Piano Comprehensive Grade 7	A+ High Distinction

Students who participate in instrument/voice lessons, or other performing arts programs outside of Bacchus Marsh Grammar, are also encouraged to forward any examination or competition results for acknowledgement in future newsletters: music@bmg.vic.edu.au.

Music Department – Woodlea Campus



Congratulations to **Trishnoor Bhatti**, **Pari Sharma** and **Venkata Pedapati** for their recent performances at our Junior School assembly. It was wonderful to note some audience participation and a great sense of both support and encouragement.



Bacchus Marsh Grammar music students, as well as those who receive instrumental lessons outside of the school, are encouraged to capitalise on upcoming performance opportunities – keep an eye out for sign-ups for both House Music and our after-school Concert Series. Parents/students should contact Ms. Kinsella if they have any questions about either event.

Music Department – Woodlea and Maddingley

2023 Instrumental Music Re-Enrolment

Later in the term, parents will be receiving EdSmart correspondence regarding the Instrumental Music Program and the re-enrolment process for existing students.

Please note that if a response to the EdSmart slip is not received, students will be automatically re-enrolled in the 2023 Instrumental Music Program with the same lesson format/s and/or Instrument Hire.

A new enrolment form should be completed for additional enrolment (e.g. a second instrument or additional AMEB Theory tuition) or, to add instrument hire.

Please contact music@bmg.vic.edu.au with any queries in the meantime.

Mr Steven Bell - Head of Faculty: Music & Performing Arts

Disney Beauty and the Beast Jr - Tickets on Sale Now

Bacchus Marsh Grammar is excited to present the Maddingley Middle School Production of *Beauty and the Beast Jr*.

Visit the link - <https://clocktowercentre.com.au/bacchus-marsh-grammar-presents-beauty-the-beast-jr/>

Performance Venue: The Clocktower Centre Moonee Ponds

Performance Dates: Sunday 11th September @1pm and @5pm

Miss Elyse Zahra

National Science Week at Bacchus Marsh Grammar – 16 to 19 August

In 2022, the world observes the United Nations International Year of Glass, celebrating what the United Nations describes as one of the most important, versatile and transformative materials of history. Glass will, without a doubt, continue to have an enormous impact into our future.

Students at Bacchus Marsh Grammar are invited to take part in a range of lunchtime activities to explore the theme of glass in their Science classrooms.

There is also an upcycling glass jar competition which we invite students to enter to consider the sustainability of this material in our everyday lives. Students must remember to include their name and their tutor group with their entries.

Schoolbox pages will have a daily list of activities at both campuses.

Mrs Li Richardson – Head of Faculty: Science & Mrs Melanie Morton - Co-ordinator of Specialist Subjects



National Science Week 16th- 19th August

Woodlea Campus



Lunchtime Activities

Tuesday : Cold Honey, Hot honey Room B101
& Sugar Cookies Room 118
Wednesday: LightBulb Room B101
Thursday : Make a Kaleidoscope Room 118
Friday: Make a Telescope Room 118

National Science Week 16th- 19th August

Junior School

Maddingley Campus Room R3



Lunchtime Activities

Tuesday : Cold Honey, Hot honey
Wednesday: Make a Telescope
Thursday : Sugar Glass-decorations
Friday: Make a Kaleidoscope

National Science Week 16th- 19th August 2022

MIDDLE & SENIOR SCHOOL
MADDINGLEY CAMPUS
ROOM: 01

Lunchtime Activities

Tuesday: Light Blub
Wednesday: Hot Glue fibres
Thursday: Jelly Optical Fibres
Friday: Marble Run

Nationally Consistent Collection of Data on School Students with Disability (NCCD)

As you are aware, every year all schools in Australia participate in the Nationally Consistent Collection of Data on School Students with Disability (NCCD). The NCCD process requires schools to identify information already available in the school about the supports provided to students with disability. These relate to legislative requirements under the *Disability Discrimination Act 1992* and the *Disability Standards for Education 2005*, in line with the *NCCD guidelines* (2019).

Bacchus Marsh Grammar has now completed the NCCD for this year. Any child for whom some level of adjustment has been made to enable them to have the opportunity to access and participate in education on the same basis as their peers, has been included in this data. These adjustments range from support provided within quality differentiated teaching practice, to substantial or extensive adjustments where there must be, for example, the provision of specialist advice on a regular basis, or adjustments to most curriculum areas.

Further information about the NCCD can be found on the [NCCD Portal](https://www.nccd.edu.au) (<https://www.nccd.edu.au>).

If you have any questions about the NCCD, please contact the school.

Mrs Michelle Graham – Executive Assistant to the Principal

PE & Sport Update

ICCES AFL results

Congratulations to our Bacchus Marsh Grammar AFL teams for winning all four divisions at Tuesday's ICCES AFL Carnival in Bendigo. This included the Junior Boys (7-8), Intermediate Boys (9-10), Junior Girls (7-9) and Senior Girls (10-12). The Senior Girls team has now qualified to represent ICCES at the next stage, so we wish them all the best in this future competition.

It was a fantastic day with all students representing the school in an extremely positive manner and playing with a wonderful spirit throughout the day. Thank you to our coaches Gabby Pino, Ainsley Grinter, Nicole Garner, Daniel Velden, Tyler Huynh and Liam McMahon who have put in some great work in the lead up to the competition and led the teams brilliantly on the day.

Mr Bryce Durham - Head of Faculty: Physical Education and Health

Western Ranges Divisional Finals

Congratulations to our AFL, soccer and tee-ball girls and mixed teams for their excellent sportsmanship and performances in the Western Ranges Division Finals.

A special mention goes to the AFL girls' team which was the overall winner of the Western Ranges Division Finals and has since competed in the Western Metropolitan Regional Finals at Galvin Park, Werribee. The team consists of girls who play football regularly outside of school and girls who had never played football before. They have worked hard during lunch time training sessions and worked extremely well as a team; this has rewarded them with some amazing results.

Western Metropolitan Regional Finals results

- BMG 66 defeated Wembley Primary School 0
- BMG 20 defeated Brookside 6
- BMG 16 defeated St Therese's Primary School 11

Western Metropolitan Region Grand Final

- BMG 21 defeated Torquay P-6 College 14

A huge congratulations to the team and best of luck in the State Finals on Thursday 18 August at Anthony Beale Reserve, St Helena.

Mr Brendan McLoughlin - BMPSSA: Sports Coordinator



Year 9 Mathematics Games Day

The BMG Year 9 Mathematics Games Day teams participated in a Mathematics Competition Day at Southern Cross Grammar School on Monday 8 August.

The teams were:

Team 1: **Lily Dannatt, Joanne Joseph, Zoe Murzello and Alessia Riepsamen**

Team 2: **Sonix Aiga, Thomas Carroll, Pearl Patel and Steve Vattasseril**

Both teams acquitted themselves well and solved many difficult problems across a range of mathematical studies including measurement, combinatorics and number theory.

All students enjoyed the challenge of solving difficult problems and working as a team.

The final results were Team 1 finished 32nd and Team 2 finished 34th.

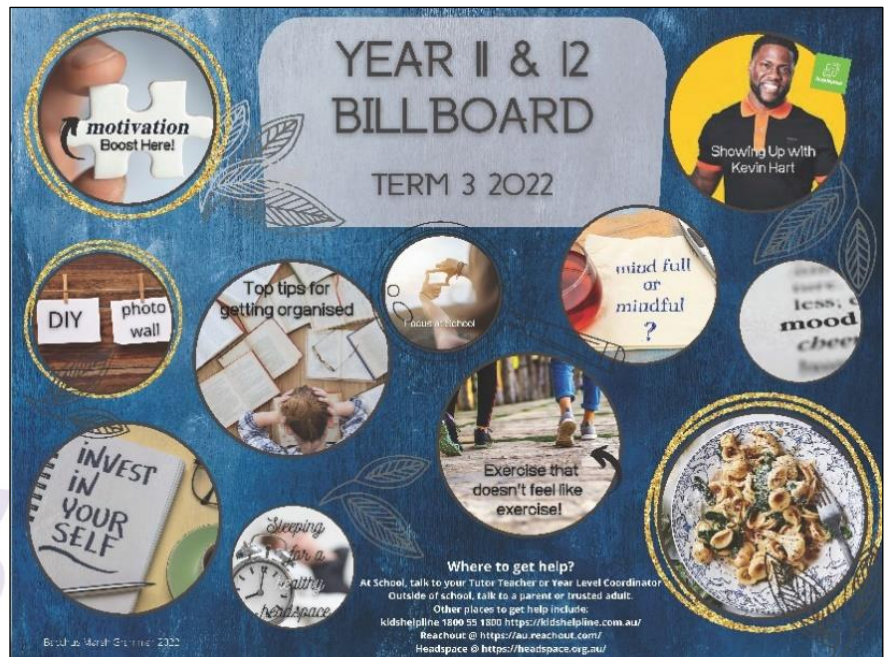
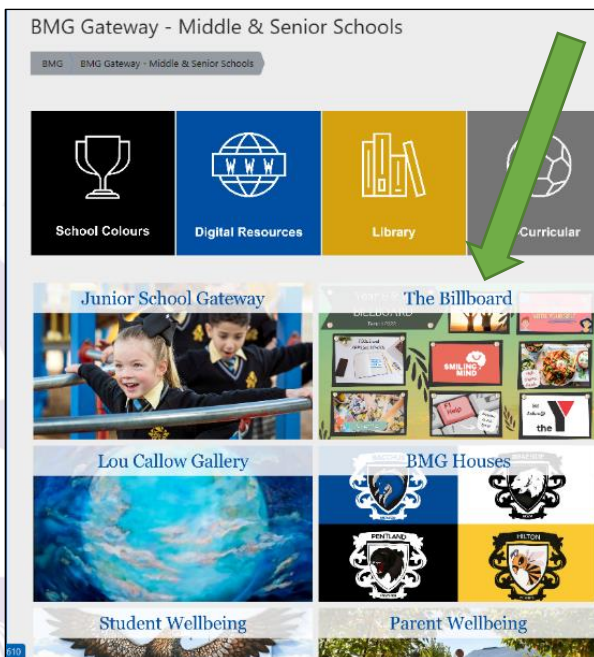
Well done to all students involved.

Mr Cameron McGregor

Student Wellbeing News – The Billboard

The Wellbeing Team have been creating interactive Billboards for students in Years 5 to 12 since 2020. This resource was developed as a way of supporting our students while learning from home. The Billboard has now become a permanent feature available to students, with a new Billboard being launched each term. It has links embedded behind most of the images, to all things health and wellbeing relevant for each year level. Some topics which are covered include friendships, resilience, being active, sleep, creative interests, coping with change, study tips, preparing for exams, eSafety, help seeking and more. The Billboards are age appropriate and aim to focus on issues important to particular year levels. We would encourage families to explore The Billboard by clicking on the images which will then direct you to information and advice from organisations such as kidshelpline, Reach Out and Headspace. The Term 3 Billboard is now available and can be found on Schoolbox, by entering the Middle and Senior School Gateway. The students can access The Billboard from their year level page. The Term 1 and 2 Billboards can also be viewed here.

Student Wellbeing Team



Premiers' Reading Challenge

Congratulations to the following students who have completed the Premiers' Reading Challenge:

Tanish Krishna 7WC

Vihaan Chandra 3WB

Jack Soley 5C

Daiwik Shah 6WB

Surya Sureshkumar 7WC

Alannah Mustafa 6A

Mrs Feona West - Junior School Teacher Librarian

Junior School News

Woodlea – 100 Days of Prep

On Friday 5 August, the Woodlea Preps celebrated their 100 Days of Prep. What a momentous milestone! It was wonderful to see all students dress up as grandmas and grandpas. Students completed a range of activities such as lawn bowls, counting by 10s to 100, thinking about what they will be doing when they are 100 years old and completing buddy activities. The Preps took their grandma and grandpa roles extremely seriously; often complaining of sore backs and knees. Thank you to all the families for supporting us and dressing their children up.

Woodlea Prep Team



Junior School Art at Maddingley

During Term Three, students at the Maddingley campus have continued to explore the Elements of Art, with a greater focus on line, shape and texture through a variety of different drawing activities. They have been learning how to add extra detail to their drawings through a range of different methods such as using line and pattern to create implied texture in their images.

Prep Reception students have been experimenting with different ways they can make lines and marks on their page and have used these different marks to create a self-portrait.

In Prep, students enjoyed reading the story 'Giraffes Can't Dance' and creating their own artwork inspired by the story.

The Year 1s have been learning about artist Paul Klee and engaging in discussions about many of his art pieces, including his continuous line drawings. The students then had lots of fun creating their own continuous line portraits.

Year 2 students have been drawing cityscapes. They have begun creating collagraphs and scratch foam cities ready to create beautiful prints.

In Year 3, students enjoyed learning about and discussing the different sections of a landscape. They created their own abstract landscapes using line and pattern to create implied texture in their work.

The Year 4s have created beautiful sea salt turtles, patterning the turtle shells and sprinkling salt over ink to create the effect of texture and movement in the ocean surrounding their turtle.

Junior School students have enjoyed regular visits to the Lou Callow Gallery where they have been able to admire and discuss the wonderful artworks on display.



Junior School Art Team- Maddingley

Junior School Art at Woodlea

Students from Prep to Year 4 have been creating some great artworks so far this term.

Students in Prep have been focusing on using their painting and collage skills to make a flower based on Eric Carle's 'The Tiny Seed'.

The students in Year 1 have been making a collagraph based on the theme of flowers and then creating their very own rubbings from this. They have also been creating a papier-mâché whale based on the picture story book, 'Walk of the Whales' by Nick Bland.

The Year 2s have been focusing on threading a needle and sewing a running stitch. They have been able to use their sewing skills to create an artwork based on the first letter of their name.

This term, the students in Year 3 will be focusing on the art elements of Art. Each lesson so far this term has focused on a different element and the children have created a piece of artwork to reflect this. The art elements which we have focused on so far this term are line, form, colour and value.

The Year 4 students have been discussing and identifying what makes them unique and then creating a self-portrait. They have been practising different sketching techniques to make their pieces more realistic by experimenting with different lines, textures and tone values.



Woodlea Community Art

It is great to see our Woodlea Campus being decorated with so many artworks. Please visit [Schoolbox](#) to read about the contributions from Junior School.

Junior School Art Team - Woodlea

Junior School - Teaching & Learning: Bright Ideas

Phonological and Phonemic Awareness Bright Idea – Blending Sounds



Sound Games

Practice blending sounds into words.

Without showing or telling what an item is, ask 'Can you guess what this word is? (Say each sound for the word or item.

/m/ - /o/ - /p/.'

Hold each sound longer than in normal speech.

Your child then must guess the word.

'I Spy' blending

Play this phoneme blending game while walking or driving.

Say, 'I see a sign that says /s/-/t/-o-/p/' Then your child must blend the sounds to guess the word — stop.

(Remember to say only the sounds in the word — not the letters.)

Keep the words short, moving from two to three to four sounds depending on your child's skill level.

ICAS Assessments - Update



For students who are registered to complete ICAS Assessments on upcoming dates (13, 20 and 27 August), information was emailed to parents/guardians via EdSmart on Monday 8 August to nominate campus and time their child will complete the assessment.

Please refer back to this communication for information on what your child is required to bring and site access to the nominated campus. Students do not need to wear their school uniform.

Contact Casey Ryder via email ryderc@bmg.vic.edu.au with any queries.

Mrs Casey Ryder

Bus Information

Roll Call – no need to make a change for one-off absence

If students are absent for the day/a period of time or not travelling on the bus as a once off, parents DO NOT need to remove their child from Roll Call. If a student does not travel, it will appear on Roll Call as NOT TRAVELLED. If a parent removes their child for a once off travel, it can remove the child from being allocated to the bus completely.

Maddingley Late bus on Monday afternoons no longer operating

As the Senior School production rehearsals have ceased on a Monday after school, there will no longer be a late bus out of Maddingley Campus on a Monday. The late buses out of Maddingley will still be in operation on a Wednesday and Thursday afternoon.

Mrs Leanne Robertson - School Bus Services Administrator

Events Calendar

Dates for upcoming events/excursions and day camps can be viewed via the events calendar on the [school website](#).

Bacchus Marsh Grammar On Campus Uniform Shop

Phone Orders – 5367 4072

Uniform information and shop business hours are listed on the [school website](#).

Regular Contacts

Student Absentees

Maddingley Campus

Absentee Line 5366 4888 or Absentee Email – maddingley_absentees@bmg.vic.edu.au

Woodlea Campus

Absentee Line 5366 4988 or Absentee Email – woodlea_absentees@bmg.vic.edu.au

Maddingley Campus

South Maddingley Road
Bacchus Marsh VIC 3340
P +61 3 5366 4800
F +61 3 5366 4850

Woodlea Campus

111 Frontier Avenue
Aintree VIC 3336
P +61 3 5366 4900
F +61 3 5366 4950

Woodlea Early Learning Centre

111 Frontier Avenue
Aintree VIC 3336
P +61 3 5366 4999
F +61 3 5366 4850

General School Email: school@bmg.vic.edu.au

School Website: www.bmg.vic.edu.au



Doctrina Vitae

Bacchus Marsh
Grammar

Community News

BIKE/SCOOTER HELMETS - A MESSAGE FROM YOUR LOCAL POLICE

This is a reminder that all users of bikes and scooters (including the motorised versions) MUST wear helmets unless exempt. We have had concerns raised by members of our community, and it is quite apparent that residents have become complacent regarding these laws.

Mandatory bicycle helmet laws were introduced in July 1990. This applies when riding:

- on roads and road-related areas
- on bike and shared paths
- in bike lanes
- in recreational parks
- in car parks
- on footpaths

Police can stop bike and scooter riders and issue a fine or a warning for not wearing an approved bicycle helmet. **The current fine for this offence is \$231.**

Research indicates that bike helmets greatly reduce the risk of head injuries, which are the major cause of death and injury to bike riders.

- Bicycle helmets reduce the chances of a serious head injury by almost 70 %
- Two years after introducing bicycle helmet laws in 1990 a 23% reduction in head injuries in Victoria.

This is a significant safety issue, and we encourage you all to look after yourselves, family, and friends.

