

BMG NEWS

21 October 2022

VOLUME 36, NUMBER 31



Year 12 Valedictory

Our Year 12s enjoyed their last formal classes at school this week and then moved into celebrations with a Dress Up morning and Valedictory Presentation evening on Thursday 20 October.

We congratulate students on their efforts this year and wish them success in completing their exams and moving into this next exciting chapter of their lives.

**Mrs Erin Thornton – Head of Senior School: Maddingley
& Mrs Natalie Desira – Deputy Head of Senior School: Maddingley**



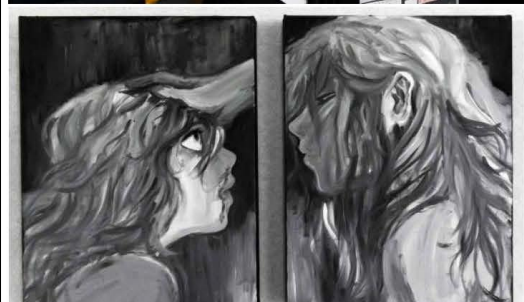
VCE Showcase

The VCE Showcase returned last week after a two-year COVID hiatus. This year's Showcase featured numerous 2021 and 2022 works from students in the Arts, Technologies and Performing Arts learning areas. The level of maturity, creativity and craftsmanship in the works on display far exceeded that which would be expected from young artists and performers; a credit to both the students and their teachers!

The Monday evening opening event was blessed with beautiful weather, with many families and guests soaking in the live music, the works on display and the canapes and mocktails on offer. It was fantastic to have the wider BMG community back on campus, celebrating the amazing work produced by our current and past students. Thank you to all who contributed and attended! View more photos via [Schoolbox](#).

Mr Jaike Ludewig – Head of Faculty - Technology





Alumni Events



Did you graduate from
BACCHUS MARSH GRAMMAR
in 2001, 2002, 2011 or 2012?



Register with our Alumni online.

Celebrating 20 and 10 Years

In November, BMG will be celebrating milestones with past students who graduated in 2001, 2002, 2011 and 2012.

Those who have registered with our Alumni have been notified of these events and dates. There is still time to register. Visit the [school's website](#) or contact alumni@bmg.vic.edu.au.

Mrs Casey Ryder

Maddingley Middle School Language Selections for 2023

We advise parents/guardians that language selection information for 2023 has been communicated to Years 5 and 6 students directly via their email address. Students in Year 4 have received a form with individual log in details via the school diary which guides parents to make selections via a Web Preferences online platform.

If any parent has not viewed this information or need a copy of log in details, please contact Reception to be directed accordingly.

Selections must be submitted by **7 November**.

Mr Rob de Wit – Assistant Principal

From the Health Centre: Camps and Excursions

As part of consent parents/guardians provide for their child/ren to attend camps and excursions, we remind you to please ensure that the medical and dietary information for each child is up-to-date.

This information assists staff to prepare for upcoming camps and excursions. In Term 4, there will be a significant increase in school activities and this information must be current.

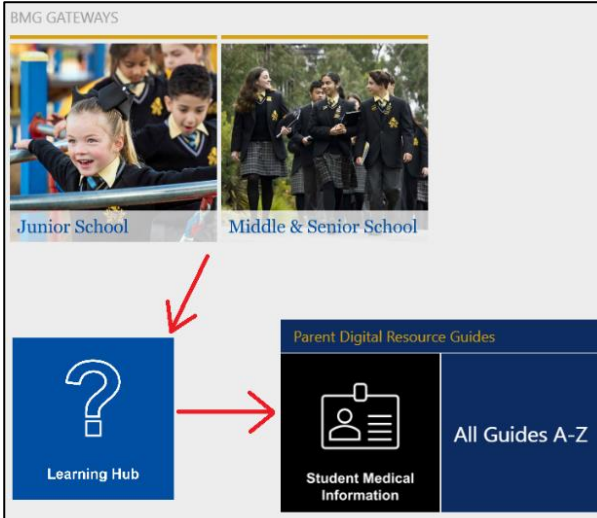
You can access the Student Medical Information user guide on how to update your child's medical and dietary information via Schoolbox.

Parents can find the user guide on the Learning Hub by following these steps:

1. Open Schoolbox and click to enter either of the **BMG Gateways**
2. Click into the **Learning Hub** (a blue tile with a question mark)
3. Locate the **'Student Medical Information'** tile under the heading 'Parent Digital Resource Guides'

If you have questions regarding your child's medical information, please contact the Health Centre at either campus.

Mrs Jo Stanley – School Nurse (RN Div 1)



BMG GATEWAYS

Junior School Middle & Senior School

Learning Hub

Parent Digital Resource Guides

Student Medical Information All Guides A-Z

Junior School News

RESPECT

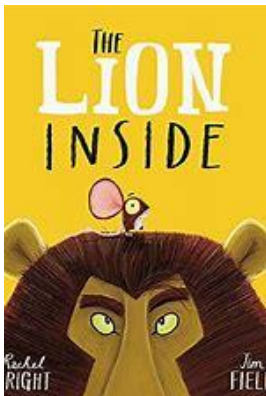
DISCIPLINE

CONFIDENCE

AMBITION

LEADERSHIP

KINDNESS

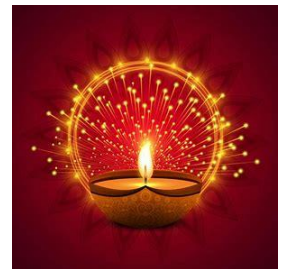


Values

Through our teaching of the School Values, Junior School students have focussed on being respectful towards each other. Developing an understanding of who they are and what they believe in has been part of classroom discussions and tasks. The mentor text 'The Lion Inside' has been shared with students to identify confidence and the importance of having the courage to be who we are and continue learning new things. We hope our students continue to progress in their understanding of their own identity and the beauty of sharing this with our school community.

Mrs Sally Savic – Head of Junior School: Woodlea & Mrs Melanie Morton / Ms Sian Rawlinson – Acting Heads of Junior School: Maddingley

Happy Diwali to all our families who are celebrating this festival!



Spotlight on Maddingley Prep

Well the bad weather held off for us, just, and we made our way out to Staughton Vale for our annual Prep Cross Country Run. And what a run it was, with only a couple of tumbles and flying hats, the Preps were impressive as their little legs made their way around the track. Around trees, over potholes and through the beautiful orchids of Staughton Vale, they all showed great fitness and determination to make it to the end. A big thank you to Mrs Bullen and all of the staff who organised the day for us.

- *I liked running in the cross country with my friends. - Kingston Taylor*
- *It was good because we ran and I saw the lemon trees. - Evelyn Stewart*
- *I ran a lot to get to the end. - Constance Soncini*
- *It was really fun and I had to do a lot of running and also it tired out my legs a lot. - Hamish Munro*

Maddingley Prep Team



Bus Information

Monday 31 October & Tuesday 1 November 2022

No Private Buses will be operating Monday 31 October due to Mid Term Break or Tuesday 1 November due to Melbourne Cup Day. Students sitting an exam on this day will be required to make their own way to school.

Woodlea Late Bus

Due to the completion of the Woodlea Campus Musical, there are no students requiring the late bus service on a Tuesday afternoon out of the Woodlea Campus.

The late bus on a Tuesday afternoon has been cancelled for the remainder of the year. A late bus will still operate on a Monday afternoon up until and including Monday 21 November.

Mrs Leanne Robertson – School Bus Services Administrator

Events Calendar

Dates for upcoming events/excursions and day camps can be viewed via the events calendar on the [school's website](#).

Out of School Hours Care (OSHC) – The Y Ballarat

The Y Ballarat operate the Out of School Hours Care at Bacchus Marsh Grammar.

Enrolments are completed online. For full information please visit the [school website](#).

Email: chrisie.ashmore@yballarat.org.au Phone: 0490 178 638 W: <https://yballarat.org.au/>

Maddingley:

maddingley.oshc@yballarat.org.au

0438 154 842

Located: South Maddingley Road,
Maddingley, Victoria 3340

Woodlea:

woodlea.oshc@yballarat.org.au

0490 490 362

Located: 111 Frontier Avenue, Aintree, Victoria. 3336.

Bacchus Marsh Grammar On Campus Uniform Shop

Phone Orders – 5367 4072

Uniform information and shop business hours are listed on the [school's website](#).

Regular Contacts

Maddingley Campus

South Maddingley Road
Bacchus Marsh VIC 3340

P +61 3 5366 4800

F +61 3 5366 4850

Woodlea Campus

111 Frontier Avenue
Aintree VIC 3336

P +61 3 5366 4900

F +61 3 5366 4950

Woodlea Early Learning Centre

111 Frontier Avenue
Aintree VIC 3336

P +61 3 5366 4999

F +61 3 5366 4850

General School Email: school@bmg.vic.edu.au

School Website: www.bmg.vic.edu.au

Community News

A message from the Student Representative Council and the Community Service Team



Woodlea Food Train



Bacchus Marsh
Grammar

Donate to those in need!

Starting in **Week 4**, food can be donated until
Friday 2nd of December.

Non-perishable food:

- Canned food (beans, veggies, soup, fish, etc)
- Tin/glass sauce (pasta etc)
- Dried food (fruit, pasta, rice, soup sachets, etc)
- Spreads (Vegemite, peanut butter, etc)

Please donate food that:

1. Is **not** past or near the expiration date
2. Is unopened
3. Has ingredients/allergens listed



Please drop off at **Woodlea**
reception!



Community News

A message from the Student Representative Council and the Community Service Team

Woodlea Collection Drive

Donate to those in need!

Starting in **Week 4**, items can be donated until **Friday 2nd of December**.



We are accepting **care** items such as:

- Dental products
- Washing products
- Personal hygiene products

Please donate items that:

1. Are **not** past or near the expiration date
2. Are unopened
3. Have ingredients/allergens listed



INGREDIENTS:
Water, Sodium Laureth Sulfate, Cocamidopropyl Betaine, Sodium Citrate, Sodium Xylenesulfonate, Sodium Lauryl Sulfate, Sodium Chloride, Cocamide Wax, Glycol Benzoate, Fragrance, Glycerin, Stearyl Alcohol, Citric Acid, Sodium Benzothiazolone, Cetyl Alcohol, Gear Hydroxypropyltrimonium Chloride, Tetrasodium Edta, Trisodium Ethylenediamine Diacetate, Polyquaternium-6, Trihydroxystearin, Pantothenol, Panthenol Ethyl Ether, Methylchloroisothiazolinone, Methylisothiazolinone

Please drop off at **Woodlea reception!**

