

Heroes of Virtue: Presented by the BMG Explorers Club

Recently the BMG Explorers Club had the opportunity to visit the Mawson Replica Hut Museum in Hobart and learn more about one of Australia's Heroes of Virtue.

Sir Douglas Mawson

Humble, curious, competent and committed. Douglas Mawson (pictured below), led Australia's first Antarctic expedition in the name of science, research and understanding, and in so doing cemented his spot as one of our country's most revered personalities.

Mawson put together the Australasian Antarctic Expedition (AAE) of 1911-14 consisting of a young team of mainly Australian and New Zealand scientists. He led the world's first truly scientific expedition to the Antarctic.

Accomplishments & challenges

Mawson and his extensive crew of scientists, students and adventurers, who were divided into multiple teams, managed to map an extensive stretch of Antarctic coastline over the next year and collected innumerable geological samples. The men faced at times insurmountable challenges.

On a sledging party led by Mawson he lost his two companions, one down a crevasse with 12 huskies, food supplies and equipment. Mawson and one of other companion fought the elements, starvation and frostbite for the entire winter of 1912 (almost two whole months) while trying to return back to base at Cape Denison. Mawson arrived alone; his colleague having died from what experts now believe was poisoning from consumption of dog liver.

The SY Aurora and most of her crew – believing Mawson and his men to have all perished during their mission – had cast off the cape only hours earlier. Mawson and the half a dozen men who had stayed behind at base, endured another year (and another winter) at Cape Denison.

(Continued over page)



5 Key Virtues displayed by Mawson

1. Courage

Mawson and his team faced unimaginable dangers—severe cold, blizzards, treacherous terrain, and physical exhaustion. Their courage in the face of constant threat to life, especially during long stretches of isolation, was unsurpassed.

2. Resilience

The ability to endure hardship is a major virtue throughout the expedition. Mawson and his companions encountered setbacks that would have broken most people—such as the loss of essential supplies, exhaustion, and injuries. Mawson himself demonstrated incredible resilience when he walked for days with frostbitten limbs and severe fatigue, all while still having to think critically about survival and progress.

3. Perseverance

Mawson’s commitment to his mission, even when things seemed bleak, is a key virtue. When faced with overwhelming adversity, he never gave up on his goal of completing the scientific and exploratory mission. This perseverance is shown not only through his physical struggle but also in the mental and emotional fortitude required to push on when the odds were stacked against him.

4. Leadership

As the leader of the expedition, Mawson demonstrated an unwavering sense of responsibility. Despite the overwhelming odds, he kept his composure and made difficult decisions, often putting the needs of the group before his own. He was also responsible for making the final decision to leave behind his companions, though it pained him deeply to do so, in order to ensure the survival of the others.

5. Selflessness

The story shows Mawson’s deep care for the welfare of his comrades. Even after the death of two of his colleagues, Mawson continued to think about the safety and well-being of others, rather than focusing solely on his own plight.

The BMG Explorers club encourages all to reflect upon the virtuous behaviour of Sir Douglas Mawson, who lived our motto. **“Character through Adventure”**



**Mr Andrew Perks – Deputy
Principal Culture and Character
Education**

Melbourne Royal Art, Craft and Cookery Competition

Bacchus Marsh Grammar excels at the 2024 Melbourne Royal Art, Craft & Cookery Competition!

We are thrilled to announce that once again, Bacchus Marsh Grammar students have demonstrated their outstanding talent at the 2024 Melbourne Royal Art, Craft & Cookery Competition. This year, our students enthusiastically entered the cupcake decorating and whole cake decorating categories.

Throughout Term 3, our hardworking students dedicated themselves to honing their creativity and techniques, resulting in an impressive array of entries. Their efforts paid off with impressive results.

Students exhibited craftsmanship in key cake decorating skills, including piping, fondant work, frosting smoothing and texturing techniques.

Congratulations to all the students who participated!



Ms Kristy Homburg – Teacher

High School Musical Jr.

We are excited to provide a wrap-up of the spectacular performance of High School Musical Jr., brought to life by the talented Middle School students of Maddingley Campus. Check out the [full web article and photos here!](#)



Duke of Edinburgh Camps

Anglesea

Well what a fantastic, challenging, inspiring week we have had at the Surf Coast trek. 102 Year 9 Duke of Ed students made their way to Anglesea to begin a journey that has made some life-long memories and developed students skills and abilities along the way.

We had two groups, one started from the Iconic Bells Beach and the other from the Lighthouse at Aireys Inlet. The hikes followed the cliff-top paths of the Great Ocean Road, passing through picturesque beaches, scenic rock formations and coastal vegetation.

Despite the challenging weather conditions along the way, we encountered diverse wildlife and enjoyed the refreshing freedom of being outdoors. Students enjoyed a demanding trek from either direction. The students camped for two nights either at the Scout Camp of Eumeralla, or at the Painkalac Reservoir, swapping places with a big day of hiking on the Wednesday. On Tuesday and Thursday, students were able to enjoy some down time and participate in some adventure based activities such as fishing, low ropes courses and archery. The Surf Coast hike promised an unforgettable experience with plenty of opportunities for fun, challenging our personal strength, and engaging with new and old friends.

We continued to develop our character education with students focusing on leadership, ambition, kindness, respect, knowledge and confidence along the way.

A huge thanks to all those involved and particularly to our BMG camp staff and our Year 9 Tutor Group teachers who were able to attend, and to our YMCA partners for all their work and assistance for our students.

WELL DONE to all the Year 9s across all the camps they were offered. You have achieved great things and made memories that will last forever.

CONGRATULATIONS on completing your adventurous journey for your Duke of Ed.



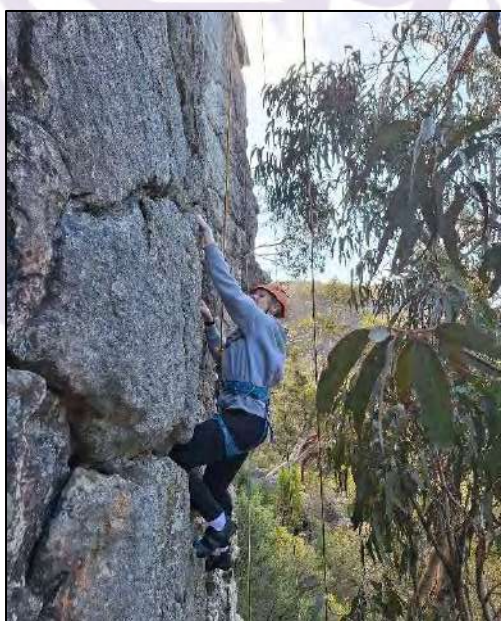
Ms Rachel McMahon – Director of Camps and Experiences Programs

Halls Gap

We're thrilled to share the highlights of our recent Year 9 Duke of Ed Experience to Halls Gap, a journey that turned into an adventure filled with exploration, learning and unforgettable memories.

Nestled in the heart of the Grampians National Park, Halls Gap proved to be the perfect backdrop for a week of educational enrichment and outdoor fun. The trip was packed with activities such as rock climbing, abseiling, canoeing, mountain bike riding, beautiful hikes and even a trip to the Halls Gap Zoo, designed to engage and inspire our students. Also important in the area, the students participated in Aboriginal culture experiences such as a visit to Bunjil's Cave for our welcome to country and a keen insight into local indigenous culture and history.

The trip to Halls Gap was more than just an educational excursion; it was a chance for students to connect with nature, develop new skills, and form lasting friendships. The feedback from students has been overwhelmingly positive, with many expressing a newfound appreciation for the natural world and a desire to continue exploring it.



Mr Conlon Love – Camp Assistant



Murray River Paddle

The Year 9 Canoe Camp on the Murray River was an unforgettable journey filled with excitement, teamwork and natural wonders.

Students paddled through serene waters and navigated thrilling challenges, all while exploring the stunning landscapes and diverse wildlife of Australia's longest river. With expert instruction and a focus on environmental stewardship, the camp fostered both skill development and a deep appreciation of nature. Evenings by the campfire brought laughter and reflection.

The camp was a great success, leaving students with lasting memories, newfound confidence and a stronger sense of teamwork.

Mr Bailey Graham – Camps Assistant

Lake Mungo

Lake Mungo is the newest addition to the Duke of Ed Program. Here is our wrap up of the camp!

The group set off early Monday morning for a long bus ride to Lake Mungo. Upon arrival, they set up tents in challenging conditions and later gathered under the stars for storytelling and stargazing with an Aboriginal Elder.

The next day began with a sunrise walk, followed by lessons on Aboriginal history and British colonization. In the evening, they reflected during a sunset viewing. On the third day, they visited the information center, explored Indigenous artifacts, and had an emotional discussion with an Elder. Later, they ran down sand dunes and celebrated the Elder's 60th birthday.

After leaving Lake Mungo, the group traveled to Culpra Milli, participated in a welcoming smoke ceremony, and relaxed by the Murray River. On their final day, they took a walk with an Elder, learning about local plants and tasting native berries, before reflecting on the experience.



Co-Curricular

Young Farmers

Last term, the Young Farmers groups at both Maddingley and Woodlea produced two life-size cows as their entry for the Australian Dairy Foundation competition called Picasso Cows.

Maddingley produced - Baby Belle the Magical Cheese Wizard

Woodlea produced - Taylor (Taila) Swiss

A big thank you to Lou Callow and Chloe Fava for their assistance in this program and making the magic happen. Our cows will be on display at both campuses for the next few weeks for students to view this fantastic work.

Our Young Farmers co-curricular happens once a week at Maddingley in Q3 every Monday lunchtime and B01 at Woodlea on Tuesday lunchtimes. Students from Years 5-12 are encouraged to come and join in and learn about all things agricultural, including sustainable farming. Our Schoolbox page (called Youngfarmers) is up and running for everyone to have a look at the program and to encourage students to come along and join the group. We are still running our lunchtime sessions for the remainder of 2024.

In 2025, we aim to be involved in the Harvest Ed program with Melbourne Uni, Picasso Cows with the Australian Dairy Foundation, the War on Waste, and the United Nations Sustainable Development Goals. We also hope to be able to offer a trip to Longerenong College - an agricultural college in Western Victoria.

Thanks to all the hard work the students have put in to achieve these wonderful results.



**Ms Rachel McMahon – Young Farmers Club
Leader**

Bacchus Marsh Flower and Garden Show

Calling all photographers

If you have an interest in Photography, why not enter the annual Bacchus Marsh Flower and Garden Show?

Students are invited to take part in the Photography competition in any of the categories below.

(continued over page)

Class	Exhibit
101	PHOTOGRAPH OF A TREE IN YOUR GARDEN
102	PHOTOGRAPH OF A TREE IN YOUR GARDEN (JUNIOR)
103	PHOTOGRAPH OF A SUNSET/SUNRISE
104	PHOTOGRAPH OF A SUNSET/SUNRISE (JUNIOR)
105	PHOTOGRAPH OF A ROSE ARBOUR
106	PHOTOGRAPH OF A ROSE ARBOUR (JUNIOR)
107	PHOTOGRAPH TAKEN BY DRONE
108	PHOTOGRAPH TAKEN BY DRONE (JUNIOR)
109	PHOTOGRAPH - BLACK AND WHITE STILL LIFE (GARDEN THEMED)
110	PHOTOGRAPH - BLACK AND WHITE STILL LIFE (GARDEN THEMED) (JUNIOR)
111	PHOTOGRAPH OF A FLOWER
112	PHOTOGRAPH OF A FLOWER (JUNIOR)
113	PHOTOGRAPH OF A GARDEN
114	PHOTOGRAPH OF A GARDEN (JUNIOR)

The images should be printed on photo-quality paper, no bigger than A3. All images should be submitted via the Maddingley reception.

Please note, there is also the colouring competition for Junior School students (with entry forms and submissions via the Maddingley reception). All entries are due for submission by 18th October. Good luck!

**Mr David Gorton – Director of Student Engagement /
Head of Staughton Vale Campus**

Junior School

Junior Art at Maddingley

During Term 4 at Maddingley, students will explore and experiment with a range of adhering techniques to create a variety of different collages.

The Prep students will be reading the story 'The Tiny Seed' by Eric Carle and use different techniques to create a collage sunflower inspired by the story.

In Year 1, students will experiment with a variety of different materials when making a 'Space themed' collage which will include using printed papers, corrugated cardboard and poly balls.

The students in Year 2 will get to enjoy creating a range of artworks including an Under the Sea themed collage, where they will use different printing techniques to create their own printed papers to use for their work.

In Year 3, students will enjoy experimenting with textiles and will work hard to master the technique of circle weaving in order to create a beautiful woven flower.

The Year 4 students will learn about and discuss the artist Roy Lichtenstein and create a 'Still Life Portrait' collage inspired by his work.

During the last few weeks of the term, students across the Junior School will begin bringing their Art folios home. These Art folios contain all the wonderful work they have completed over the year. The students are very proud of the work they have created and are very excited to be able to bring it home to share with their families!



Junior School Art Team – Maddingley

Middle School

In Week 10 of Term 3, a number of our Year 7 students visited the Staughton Vale Campus to develop their artistic skills and their geographic knowledge.

From an artistic perspective, students investigated the importance of local flora associated with each of the new school Houses. They then decorated floral emblems (as pictured below) representing each House. These emblems will form part of a collaborative art installation at the Maddingley Campus.

Students also researched factors affecting the liveability of Staughton Vale and the Anakie region. Students used their knowledge of liveability criteria and their mapping skills to propose additional services for Staughton Vale. Students also examined the services available to residents in Anakie and reflected on how these contribute to the area's liveability.

It was a wonderful day of connecting with nature and each other.



Miss Agata Kula - Head of Humanities: Maddingley

House Debating

Woodlea House Debating



In Term 3, Woodlea held its first ever House Debating Competition. This was conducted as three separate events with students in age groups of Years 5 & 6, 7 & 8 and 9 & 10. Students debated on a range of diverse topics and worked tirelessly in House teams to prepare their speeches.

The events were a showcase of the depth of skill we have in the areas of public speaking and critical thinking at Woodlea. Each debate required students to research and critically analyse a complex issue in current society.

Congratulations to the winning Houses!
Participating students have collected valuable House points for their House.

Year 5 and 6

Djerriwarrh, Parwan, Dale and Toolern.

Year 7 and 8

Kororoit, Parwan, Dale, Toolern

Year 9 and 10

Lerderberg, Pyrites, Dale, Kororoit

I thank all students who participated in this opportunity to represent their House and the House Leaders and teachers who assisted in adjudicating the debates.



Mrs Lee Tadic - Debating Coordinator/ Parwan House Leader

Australian History Competition

We are pleased to announce the impressive results of our Maddingley and Woodlea students in the Australian History Competition.

In all year levels, our students outperformed the national average on challenging test papers based on ACARA History knowledge and skills. We also had some outstanding individual student results including High Distinctions.

Thank you to the Humanities teams on both campuses for supporting the involvement of our students. To our historians, congratulations to each of you for stepping out of your comfort zone and taking on this challenge. It is through these bold efforts that you grow and achieve great things.



Ms Zoe Erickson – Head of Humanities: Woodlea and Miss Agata Kula - Head of Humanities: Maddingley

Physical Education, Health and Sport News

Woodlea Footy Day

With footy grand finals fast approaching during Term 3, Woodlea students celebrated with a Sports Teams Colours Day on the last day of term. They had the opportunity to wear the colours of either their favourite sporting team or the colours of a team that they represented themselves. AFL Football skills activities were also held in the gym during the lunch break, building on the excitement of the AFL Finals taking place that weekend. It was lovely to see such a great variety of colours and teams being so proudly represented across the school.



Mr George Delic – Head of House: Kororoit

Health Centre

Spring has sprung

A friendly reminder that, with the start of Spring, comes the arrival of Hayfever/Allergic Rhinitis season.

Please commence the daily routine of getting your child to take antihistamines on school mornings so they can get through their school day symptom-free.

Daily antihistamine can be taken either every morning OR every night time, with your child waking with medication already working in their system and not being forgotten when heading out the door for the bus or getting in the car.

Any concerns around this please contact the Health Centre or use the link to update your understanding of [Hayfever Allergic Rhinitis \(hayfever\) - Allergy & Anaphylaxis Australia](#)

School policy for students with Anaphylaxis

Friendly reminder: If your child has been diagnosed with Anaphylaxis by a doctor, it is crucial for the safety of your child that the BMG Health Centre is notified if you have not done so already.

Please [click here](#) to view the BMG Allergies and Anaphylaxis Policy and Procedures with particular focus on marker 3.4 explaining the role of the Parent/ Carer.

If you have any questions or queries, please contact the Health Centre on healthcentre@bmg.vic.edu.au or, alternatively, call 5366 4800 (Maddingley) or 5366 4900 and request to be forwarded to the Health Centre.

School Nurse Team

Administration

Conveyance Allowance

Applications for Conveyance Allowance are still open for 2024. If you would like to apply for the Conveyance Allowance in 2024 as a first-time applicant, please see below:



The Conveyance Allowance is a contribution towards transport costs and is not intended to cover the full cost of transporting children to and from school.

The Conveyance Allowance may be available to students attending government or non-government schools:

- travelling by public transport or by private car, motorbike, bicycle, or bus, and
- whose nearest school is not serviced by a free school bus provided under the School Bus Program

Eligibility Criteria:

1. Students must reside 4.8km or more from the nearest school/campus they attend.
2. Students must be of school age and reside in Victoria
3. Students must be enrolled in a school for 3 or more days per week.

A student who meets the above requirements may be eligible if they:

- attend their nearest or designated neighbourhood government school/campus appropriate to their year level, at which admission is permissible, or
- attend their nearest appropriate non-government school/campus appropriate to their year level, at which admission is permissible, and
- reside 4.8km or more by the shortest practicable route from the campus attended.

Note: Eligibility is assessed when the school completes your child's application on the Student Conveyance Allowance System (SCAS). If approved, the allowance payable is based on the one-way distance to make the journey to and from school.

Application forms can be downloaded from the school website; additional information can also be found here.

If you already have a Conveyance Allowance application in place and your circumstances have changed, for example, method of transport to school, change of address, or if you have had an additional child start at the school who you would like to apply for - please submit a new application form. If you do not submit a new application form after changes in circumstance, your application may be rejected.

Please direct any queries you may have to Nicole Tandy at conveyance@bmg.vic.edu.au

Mrs Nicole Tandy – Finance Officer (Accounts Payable)

Visual Art and Technology faculties are proud to present

A wonderful collection of works by our creative and innovative Art, Computing, Media, Product Design, Systems Engineering and Visual Communication Design students.

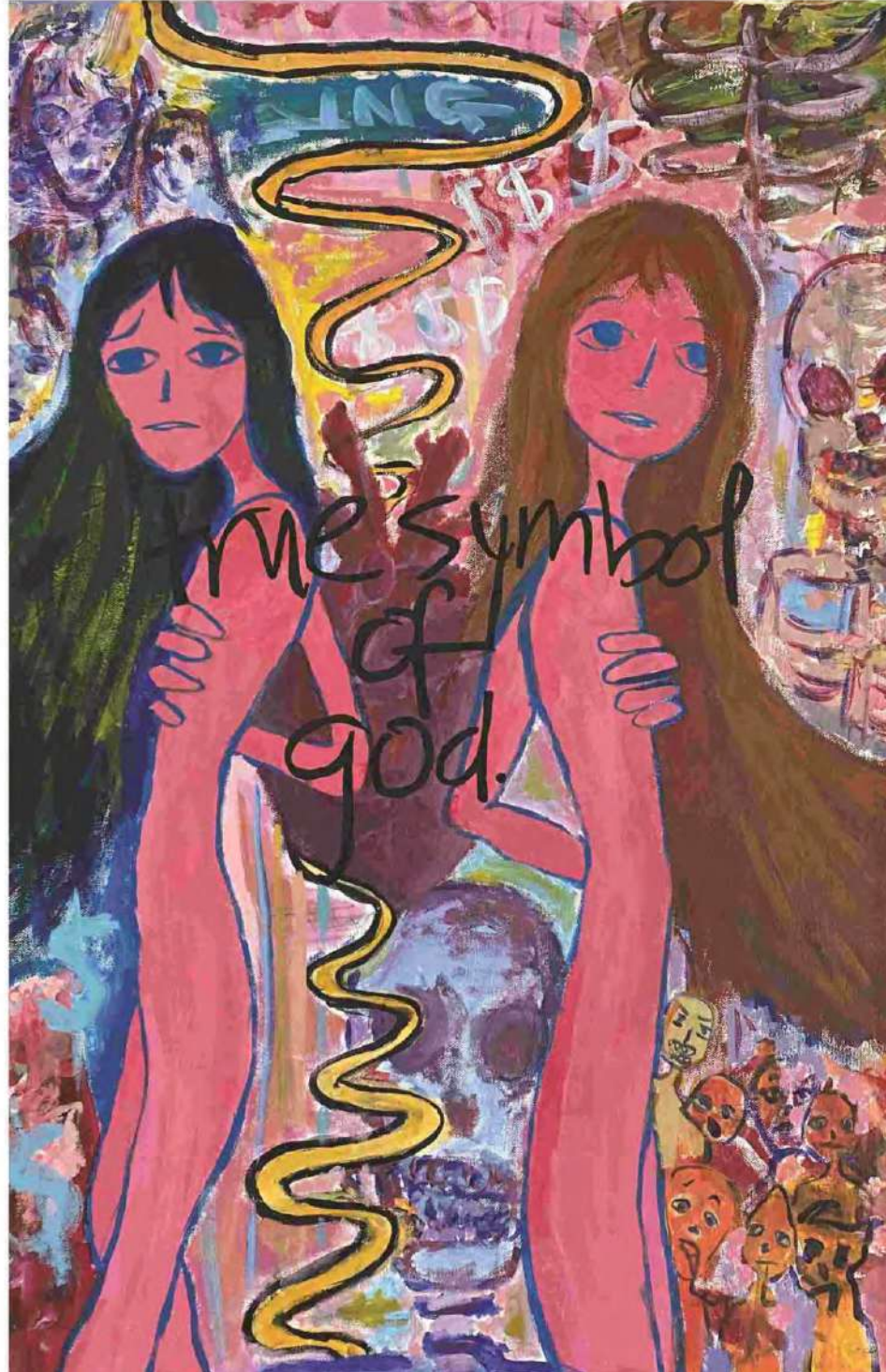
Opening night: Wednesday 16th October
3:30 - 6:30pm Lou Callow Gallery

Exhibition closes: Monday 28th October

Music and refreshments provided by our talented
Music and Hospitality students during the opening.

**SHOWCASE
VCE 2024**

Krishna Mahinay *True Symbol Of God*, 508 x 762mm, Acrylic Paint on canvas



Bus and Transport Updates

Mid-term Break: Monday 4 November

No private, public or country buses will be operating Monday 4 November due to the Mid Term Break. Students sitting an exam on this day will be required to make their own way to and from school.

Bullengarook Country Bus Service

The country bus service on the Bullengarook-Bacchus Marsh route has had an update to its current timetable. The new timetable will be effective as of Monday 14 October 2024. The stop originally at Coimadai Fire Station has been removed, and a new stop has been added at the corner of McMullins Lane & Gisborne Road. The updated timetable has been posted on school box.

Holts Lane – Morrison Drive Bus Service

The public bus service on the Holts Lane-Morrison Drive route has been updated. The new timetable is effective as of Monday 7 October 2024. The updated timetable has been posted on School Box.

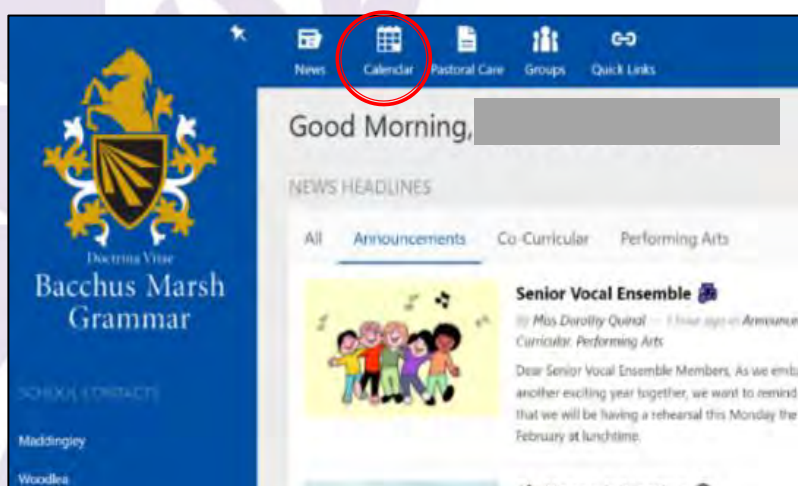
Mrs Leanne Robertson – School Bus Services Administrator

2024 & 2025 Term Dates

Both the 2024 and 2025 Term Dates are published on the [school's website](#).

Events Calendar

All upcoming events feature on the Schoolbox Calendar for both students and parents/guardians to view.



Uniform Shop

Uniform information and shop business hours for both the Maddingley Campus Onsite Shop and Rushfords in Werribee are listed on the [school's website](#).

Please note that uniforms can also be purchased online via <https://www.noone.com.au/>.

The on-campus uniform shop will be closed for the first week of school holidays and reopen in the second week of school holidays with the below hours:

Monday 30 September	10.00am – 2.00pm
Wednesday 2 October	10.00am – 2.00pm
Friday 4 October	10.00am – 2.00pm

Health Centre

New Contact Method for Maddingley and Woodlea Health Centre

We would like to inform all parents that the Maddingley and Woodlea Health Centres have transitioned to using mobile phones as the primary means of communication with parents. This change is intended to streamline and improve the efficiency of our communication.

Contact Information:

Maddingley Health Centre Mobile Number: 0409 660 290

Woodlea Health Centre Mobile Number: 0448 281 290

Please save these numbers in your contacts to ensure you can easily recognise calls from the health centres.

Families can still reach the Health Centre through Reception if they wish to do so.

We encourage all parents to update their contact lists and ensure that these numbers are accessible. This change aims to provide a more direct and prompt communication channel between the Health Centre and parents. Thank you for your cooperation and understanding.

Health Centre Team

Out of School Hours Care (OSHC) – The Y Ballarat

The Y Ballarat operates the Out of School Hours Care at Bacchus Marsh Grammar. Enrolments are completed online. For full information please visit the [school's website](#).

Email: chrisie.ashmore@yballarat.org.au Phone: 0490 178 638 W: <https://yballarat.org.au/>

Maddingley:
maddingley.oshc@yballarat.org.au
0438 154 842

Woodlea:
woodlea.oshc@yballarat.org.au
0490 490 362



Regular Contacts

Maddingley Campus
South Maddingley Road
Bacchus Marsh VIC 3340
P +61 3 5366 4800
F +61 3 5366 4850

Woodlea Campus
111 Frontier Avenue
Aintree VIC 3336
P +61 3 5366 4900
F +61 3 5366 4950

Woodlea Early Learning Centre
111 Frontier Avenue
Aintree VIC 3336
P +61 3 5366 4999
F +61 3 5366 4850

General School Email: school@bmg.vic.edu.au

School Website: www.bmg.vic.edu.au

Remembering
OUR VETERANS & ARMED FORCES

**REMEMBRANCE DAY
COMMEMORATIVE SERVICE**

SUNDAY 3 NOVEMBER, 2024 10:30AM
WOODLEA TOWN PARK | LIM WAY, AINTREE



FROM THE COMPANY THAT BROUGHT YOU
'GREASE', 'WE WILL ROCK YOU' & 'THE WIZARD OF OZ'

2 SHOWS ONLY! DON'T MISS OUT!

ENOUGH | JUST THE WAY
YOU ARE

LIVE MUSIC EVENT

LIVE BAND | VOCAL ENSEMBLE | SINGERS | SOUND&LIGHTS
EPIC MUSIC | FAMILY EVENT

11AM | **27 OCT** | 
5PM | **2024**

Impresario Theatre, 5 Grant St. Bacchus Marsh Ph: 5367 6864
<https://events.humanitix.com/enough-just-the-way-you-are>